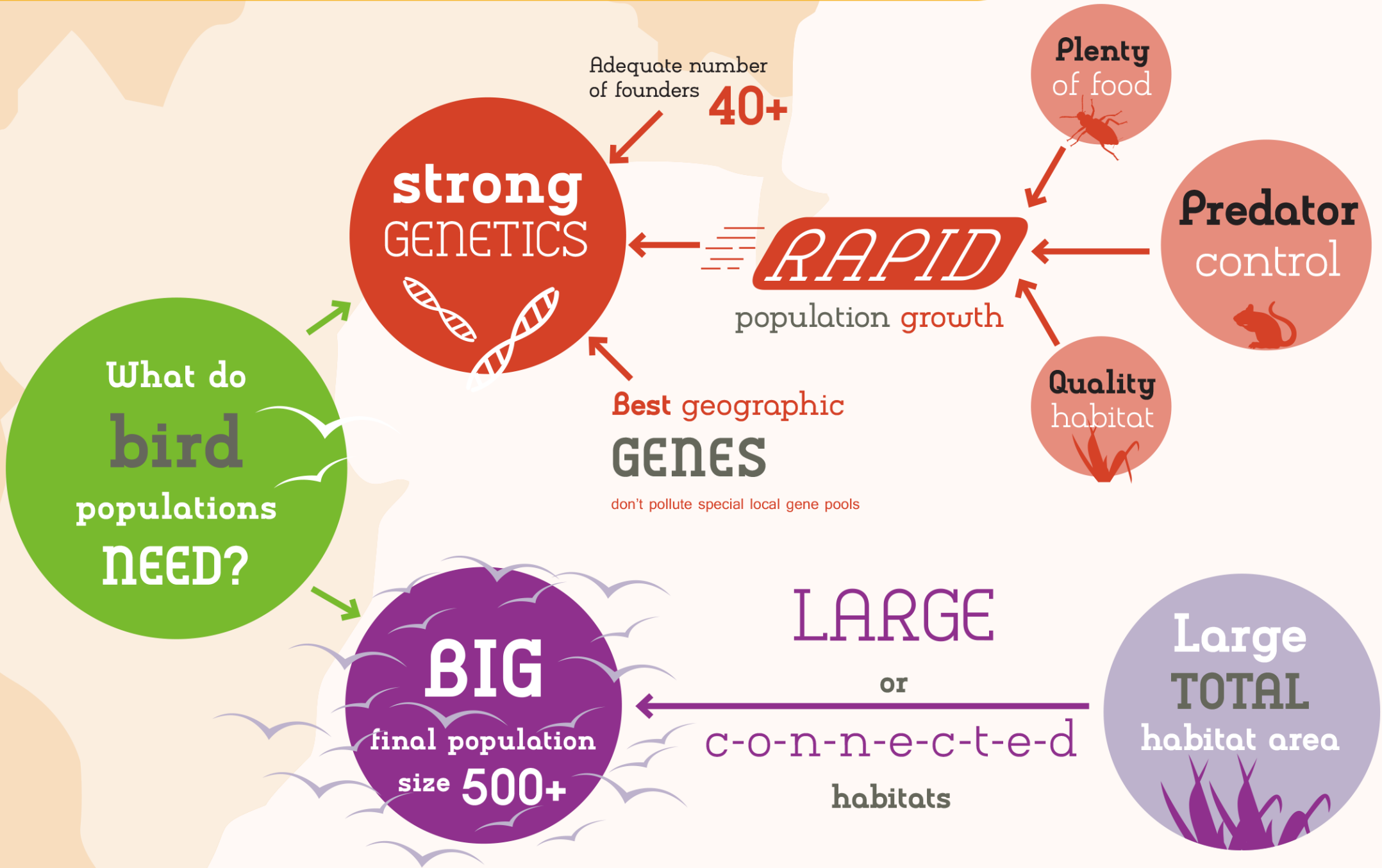
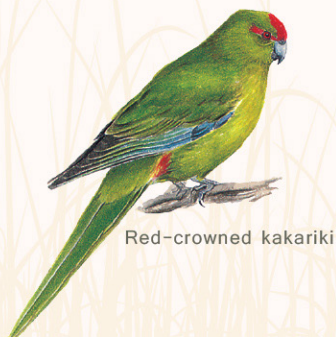
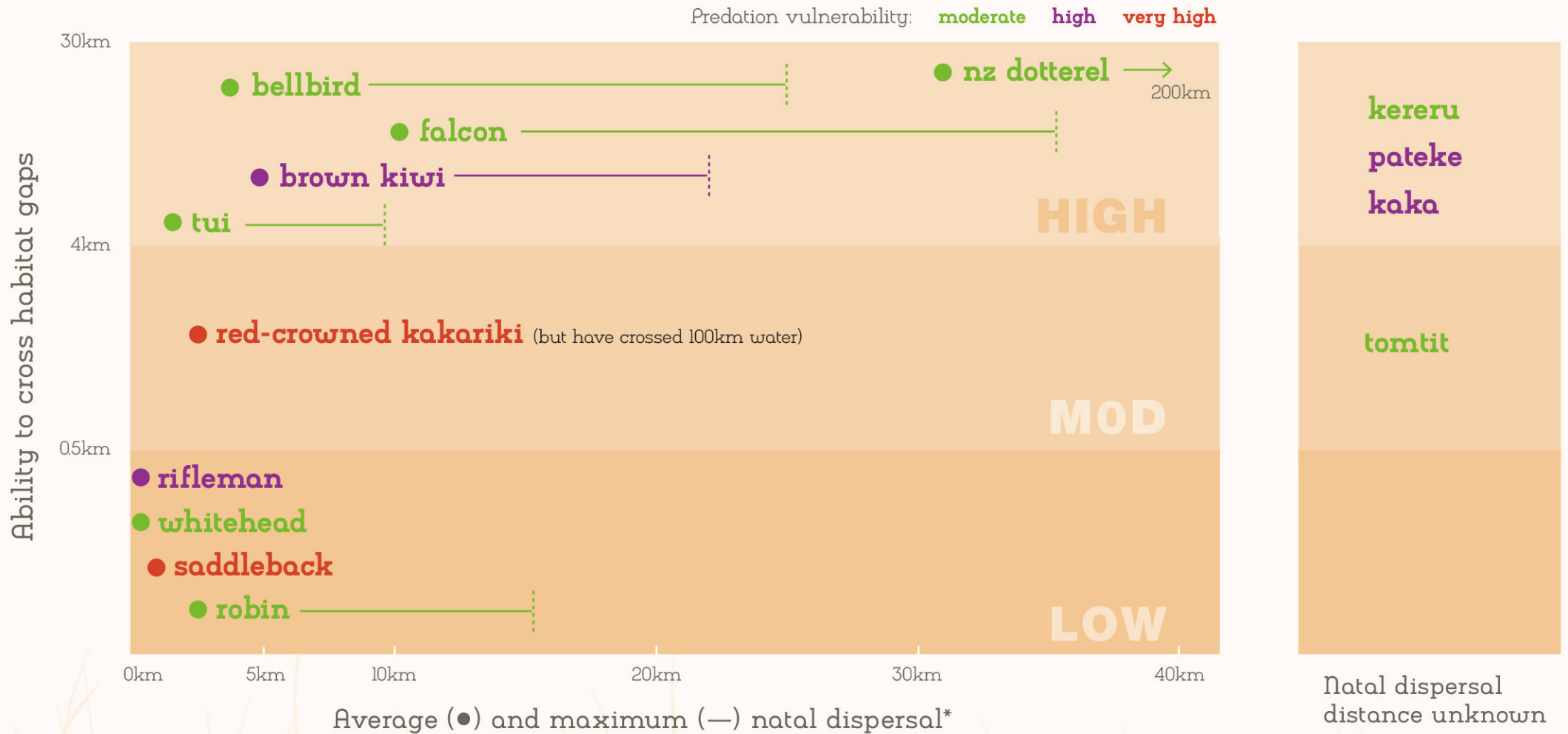


# RESTORING BIRDS in Cape-to-City



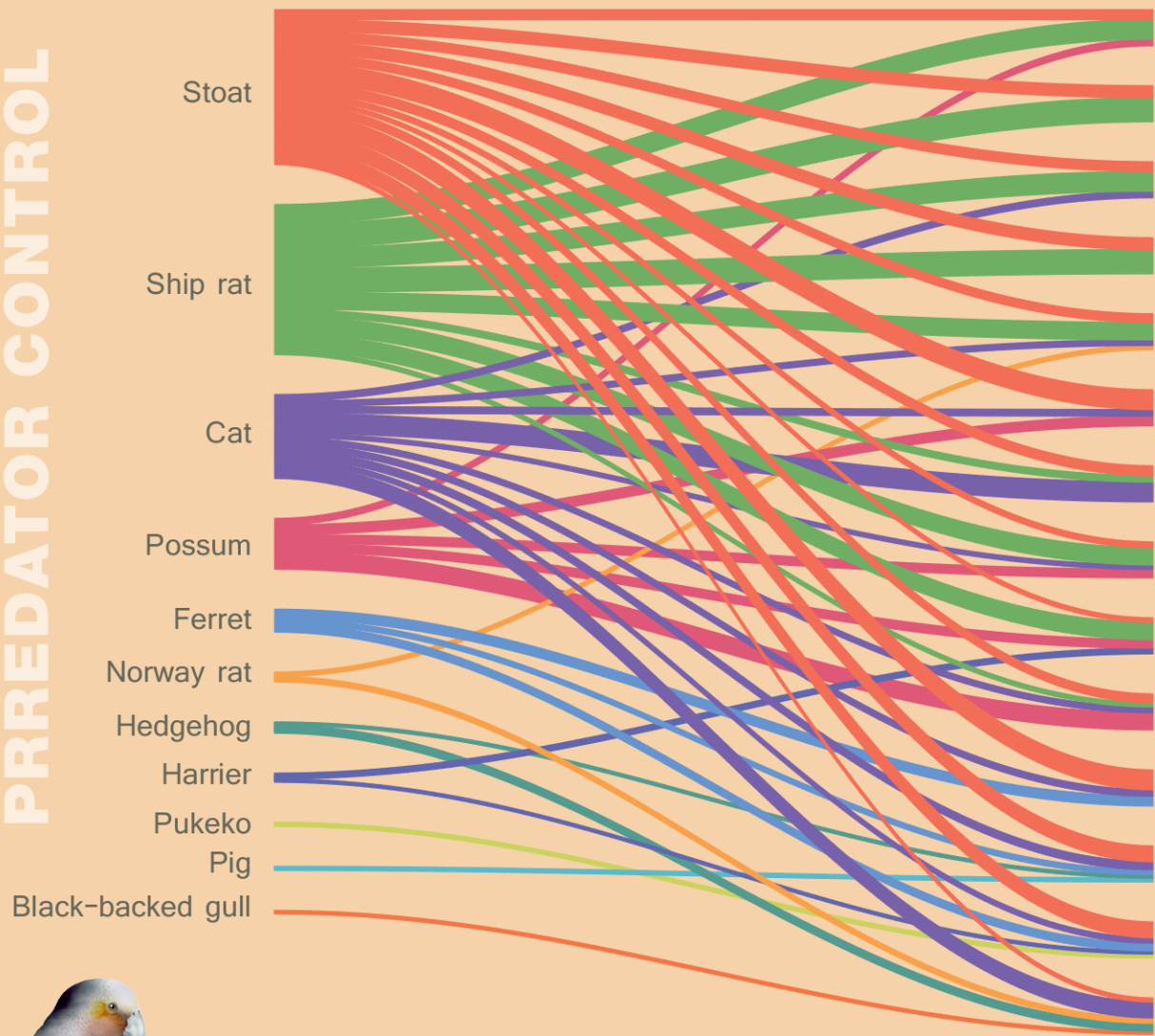
# BIRD mobility and vulnerability





# What do Cape-to-City BIRDS NEED?

PRREDATOR CONTROL

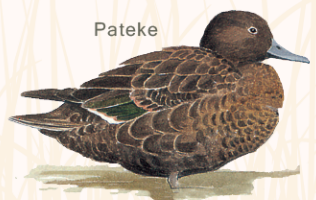


OTHER MANAGEMENT

- Whitehead Plant for connectivity
- Rifleman Plant for connectivity
- Robin Plant for connectivity
- Tomtit Plant for connectivity
- Saddleback Plant for connectivity
- Kaka PR to counter tree damage
- R-c kakariki Plant for connectivity
- Bellbird Plant food trees
- Kereru Plant food trees
- Tui Plant food trees
- Brown kiwi Dog management
- Falcon PR; forestry management
- Pateke Wetland creation; dog management
- NZ dotterel Limit human and dog disturbance



Kaka



Pateke



Saddleback



Tomtit



Brown kiwi



Rifleman



Kereru



# PEST-FREE Cape-to-City 2050



John Innes, Neil Fitzgerald, Landcare Research, Hamilton, New Zealand. Email: John Innes at [innesj@landcareresearch.co.nz](mailto:innesj@landcareresearch.co.nz)

June 2016.

**Graphics:** Nicolette Faville, Landcare Research, Palmerston North, New Zealand

**Bird illustrations:** Morgan Rothwell, courtesy Kakariki Games and Derek Onley, from The Field Guide to the Birds of New Zealand (Penguin Books NZ), © The Ornithological Society of New Zealand

**Thanks to:** John McLennan and Dianne Brunton, Fiona Carswell, Rob Chappell, Kelly Eaton, Raewyn Empson, Denise Fastier, Peter Frost, John Heaphy, Matt Maitland, Nigel Miller, Grant Norbury, Luis Ortiz-Catedral, Kevin Parker, Ralph Powlesland, Matt Rayner, Jenny Rickett, Hugh Robertson, Jess Scrimgeour, Richard Seaton, Chris Smuts-Kennedy, Clare St Pierre, Gillian Wadams, Tamsin Ward-Smith.

**Funding:** Hawkes Bay Regional Council, Aotearoa Foundation and core funding to Landcare Research from the Ministry of Business, Innovation and Employment's Science and Innovation group.